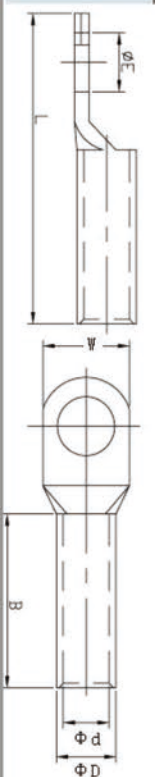


AT COPPER TUBE TERMINALS AT铜管端子



ITEM NO 2010-2012	DIMENSIONS					
	ΦE	ΦD	Φd	W	B	L
AT1-5-4	4.2	3.7	1.8	8.0	5.0	16.0
AT1-5-5	5.2	3.7	1.8	8.0	5.0	16.0
AT1-5-6	6.5	3.7	1.8	10.0	5.0	18.0
AT2-5-4	4.2	4.0	2.4	8.0	7.0	18.0
AT2-5-5	5.2	4.0	2.4	10.0	7.0	20.0
AT2-5-6	6.5	4.0	2.4	10.0	7.0	20.0
AT2-5-8	8.2	4.0	2.4	12.0	7.0	23.0
AT4-4	4.2	4.8	3.1	10.0	7.0	20.0
AT4-5	5.2	4.8	3.1	10.0	7.0	20.0
AT4-6	6.5	4.8	3.1	10.0	7.0	20.0
AT4-8	8.2	4.8	3.1	12.0	7.0	23.0
AT6-4	4.2	5.5	3.8	10.0	9.0	23.0
AT6-5	5.2	5.5	3.8	10.0	9.0	23.0
AT6-6	6.5	5.5	3.8	12.0	9.0	23.0
AT6-8	8.2	5.5	3.8	12.0	9.0	27.0
AT6-10	10.5	5.5	3.8	15.0	9.0	28.0
AT10-5	5.2	6.2	4.5	12.0	9.0	25.0
AT10-6	6.5	6.2	4.5	12.0	9.0	25.0
AT10-8	8.2	6.2	4.5	12.0	9.0	27.0
AT10-10	10.5	6.2	4.5	15.0	10.0	32.0
AT10-12	12.7	6.2	4.5	17.0	10.0	32.0
AT16-5	5.2	7.1	5.4	12.0	12.0	30.0
AT16-6	6.5	7.1	5.4	12.0	12.0	30.0
AT16-8	8.2	7.1	5.4	12.0	12.0	32.0
AT16-10	10.5	7.1	5.4	15.0	12.0	36.0
AT16-12	12.7	7.1	5.4	16.0	12.0	36.0
AT25-5	5.2	8.8	6.8	13.0	13.0	30.0
AT25-6	6.5	8.8	6.8	13.0	13.0	30.0
AT25-8	8.2	8.8	6.8	13.0	13.0	32.0
AT25-10	10.5	8.8	6.8	16.0	13.0	37.0
AT25-12	12.7	8.8	6.8	18.0	13.0	41.0
AT25-14	14.7	8.8	6.8	18.0	13.0	41.0
AT35-6	6.5	10.6	8.2	15.0	14.0	35.0
AT35-8	8.2	10.6	8.2	15.0	14.0	35.0
AT35-10	10.5	10.6	8.2	15.0	14.0	36.0
AT35-12	12.7	10.6	8.2	18.0	15.0	45.0
AT35-16	14.7	10.6	8.2	18.0	15.0	47.0
AT50-6	6.5	12.4	9.5	18.0	18.0	43.0
AT50-8	8.2	12.4	9.5	18.0	18.0	43.0
AT50-10	10.5	12.4	9.5	18.0	18.0	43.0
AT50-12	12.7	12.4	9.5	18.0	18.0	45.0
AT50-14	14.7	12.4	9.5	20.0	18.0	47.0
AT70-6	6.5	14.7	11.2	21.0	21.0	50.0
AT70-8	8.2	14.7	11.2	21.0	21.0	50.0
AT70-10	10.5	14.7	11.2	21.0	21.0	50.0
AT70-12	12.7	14.7	11.2	21.0	21.0	50.0
AT70-14	14.7	14.7	11.2	21.0	21.0	50.0
AT70-16	16.5	14.7	11.2	21.0	21.0	53.0
AT95-8	8.4	17.4	13.5	25.0	23.0	55.0
AT95-10	10.5	17.4	13.5	25.0	23.0	55.0
AT95-12	12.7	17.4	13.5	25.0	23.0	55.0
AT95-14	14.7	17.4	13.5	25.0	23.0	55.0
AT95-16	17.0	17.4	13.5	25.0	23.0	55.0
AT120-8	8.2	19.4	15.0	28.0	25.0	60.0
AT120-10	10.5	19.4	15.0	28.0	25.0	60.0
AT120-12	12.7	19.4	15.0	28.0	25.0	60.0
AT120-14	14.7	19.4	15.0	28.0	25.0	63.0
AT120-16	17.0	19.4	15.0	28.0	25.0	63.0
AT150-8	8.4	21.2	16.5	30.0	30.0	69.0
AT150-10	10.5	21.2	16.5	30.0	30.0	69.0
AT150-12	12.7	21.2	16.5	30.0	30.0	69.0
AT150-14	14.7	21.2	16.5	30.0	30.0	69.0
AT150-16	17.0	21.2	16.5	30.0	30.0	69.0
AT150-20	17.0	21.2	16.5	30.0	30.0	73.0
AT185-10	10.5	23.5	18.5	34.0	36.0	78.0
AT185-12	13.0	23.5	18.5	34.0	36.0	78.0
AT185-14	14.7	23.5	18.5	34.0	36.0	78.0
AT185-16	17.0	23.5	18.5	34.0	36.0	78.0
AT185-20	21.0	23.5	18.5	34.0	36.0	78.0
AT240-10	10.5	26.5	21.0	38.0	42.0	92.0
AT240-12	13.0	26.5	21.0	38.0	42.0	92.0
AT240-14	14.7	26.5	21.0	38.0	42.0	92.0
AT240-16	17.0	26.5	21.0	38.0	42.0	92.0
AT240-20	21.0	26.5	21.0	38.0	42.0	92.0
AT300-10	10.5	30.0	23.5	43.0	46.0	101.0
AT300-12	13.0	30.0	23.5	43.0	46.0	101.0
AT300-14	14.7	30.0	23.5	43.0	46.0	101.0
AT300-16	17.0	30.0	23.5	43.0	46.0	101.0
AT300-20	21.0	30.0	23.5	43.0	46.0	101.0
AT400-12	13.0	36.5	28.5	50.0	49.0	114.0
AT400-14	14.7	36.5	28.5	50.0	49.0	114.0
AT400-16	17.0	36.5	28.5	50.0	49.0	114.0
AT400-20	21.0	36.5	28.5	50.0	49.0	114.0
AT500-14	14.7	39.0	30.0	56.0	53.0	124.0
AT500-16	17.0	39.0	30.0	56.0	53.0	124.0
AT500-20	21.0	39.0	30.0	56.0	53.0	124.0
AT630-16	17.0	45.0	35.0	65.0	61.0	144.0
AT630-20	21.0	45.0	35.0	65.0	61.0	144.0
AT800-20	21.0	49.5	39.0	72.0	78.0	170.0